

UNLV Student Profiles and Undergraduate Assessment

By

Mya Starling, M.B.A.

Director of Institutional Research

Judd Harbin, Ph.D.

Director of Campus Life Assessment

Student Profiles and Assessment

- UNLV Office of Decision Support
 - Undergraduate Student Profile, Fall 2014
 - Graduate Student Profile, Fall 2014
 - Undergraduate Enrollment, Retention, and Graduation
- UNLV Campus Life Assessment
 - Student Satisfaction Inventory (SSI), Spring 2014
 - National Survey of Student Engagement (NSSE)
 - NASPA Campus Activities Consortium Study, Spring 2015

UNLV Fall Enrollment

	2010	2011	2012	2013	2014
TOTAL	28,203	27,364	27,389	27,848	28,515
Undergraduate	22,538	22,138	22,432	23,099	23,813
Graduate	4,880	4,446	4,204	4,023	4,010
Professional	804	794	766	742	715

Source: UNLV Analytics official preliminary fall enrollment census

2014 Undergraduate Enrollment by College of Major

College/School	Number	Percent
Liberal Arts	3,353	13.5
Business	3,318	13.3
Sciences	2,700	10.8
Hotel Administration	2,570	10.3
Urban Affairs	2,357	9.5
Engineering	2,198	8.8
Health Sciences	2,096	8.4
Fine Arts	1,736	7.0
Nursing	1,386	5.6
Education	1,062	4.3
Academic Success Center / Undeclared	2,119	8.5

Source: UNLV Analytics official preliminary fall enrollment census, includes dual/multi majors

Key Demographics: Undergraduates

Gender

Female	13,147	55.2%
Male	10,666	44.8%

Age

24 & Under	18,387	77.2%
25 & Older	5,426	22.7%
Age Range	13 - 83	
Average	22	

Race/Ethnicity

Minority Enrollment	58.2%
Hispanic	24.9%
American Indian/Alaska Native	0.3%
Asian	15.4%
Native Hawaiian/Pacific Islander	1.4%
Black/African-American	7.6%
Two or More Races	8.6%

Full/Part Time

Full-Time	17,444	73.3%
Part-Time	6,369	26.7%

Residency

Resident	20,003	84.0%
Non-Nevada, U.S.	2,929	12.3%
International	881	3.7%

Veterans

There are 950 enrolled state-supported veterans, 854 of whom are undergraduates

2014 Graduate Enrollment by College

College/School	Number	Percent
Education	1,152	25.9
Urban Affairs	549	12.4
Business	405	9.1
Law	391	8.8
Liberal Arts	356	8.0
Dental Medicine	337	7.6
Engineering	229	5.2
Sciences	229	5.2
Fine Arts	214	4.8
Allied Health Sciences	167	3.8
Hotel Administration	145	3.3
Nursing	139	3.1
Community Health Services	131	2.9

Source: UNLV Analytics official preliminary fall enrollment census, includes dual/multi majors

Key Demographics: Graduate and Professional Students

Gender

Female	2,660	56.5%
Male	2,052	43.5%

Age

24 & Under	999	21.2%
25 & Older	5,426	22.7%
Age Range	14 - 77	
Average	30	

Race/Ethnicity

Minority Enrollment	33.1%
Hispanic	11.6%
American Indian/Alaska Native	0.5%
Asian	8.3%
Native Hawaiian/Pacific Islander	0.5%
Black/African-American	6.9%
Two or More Races	5.3%

Full/Part Time

Full-Time	2,337	49.6%
Part-Time	2,375	50.4%

Residency

Resident	3,543	75.2%
Non-Nevada, U.S.	883	18.7%
International	286	6.1%

Veterans

There are 950 enrolled state-supported veterans, 96 of whom are graduate students

Key Characteristics: Undergraduates

Average Credit Hours Attempted ¹	
Full-time students	
Part-time students	

Retention Rate ²	%
Full-time freshmen	
Part-time freshmen	

Grade Point Average	
New Freshmen (High School GPA) ²	
Undergraduate Degree Seeking ¹	

Graduation Rate ² (Fall 2008 freshmen)	%
4 Years or fewer	
6 years	

1 UNLV Analytics official preliminary census
2 Office of Decision Support, Current Student Profile

Undergrad Student Employment

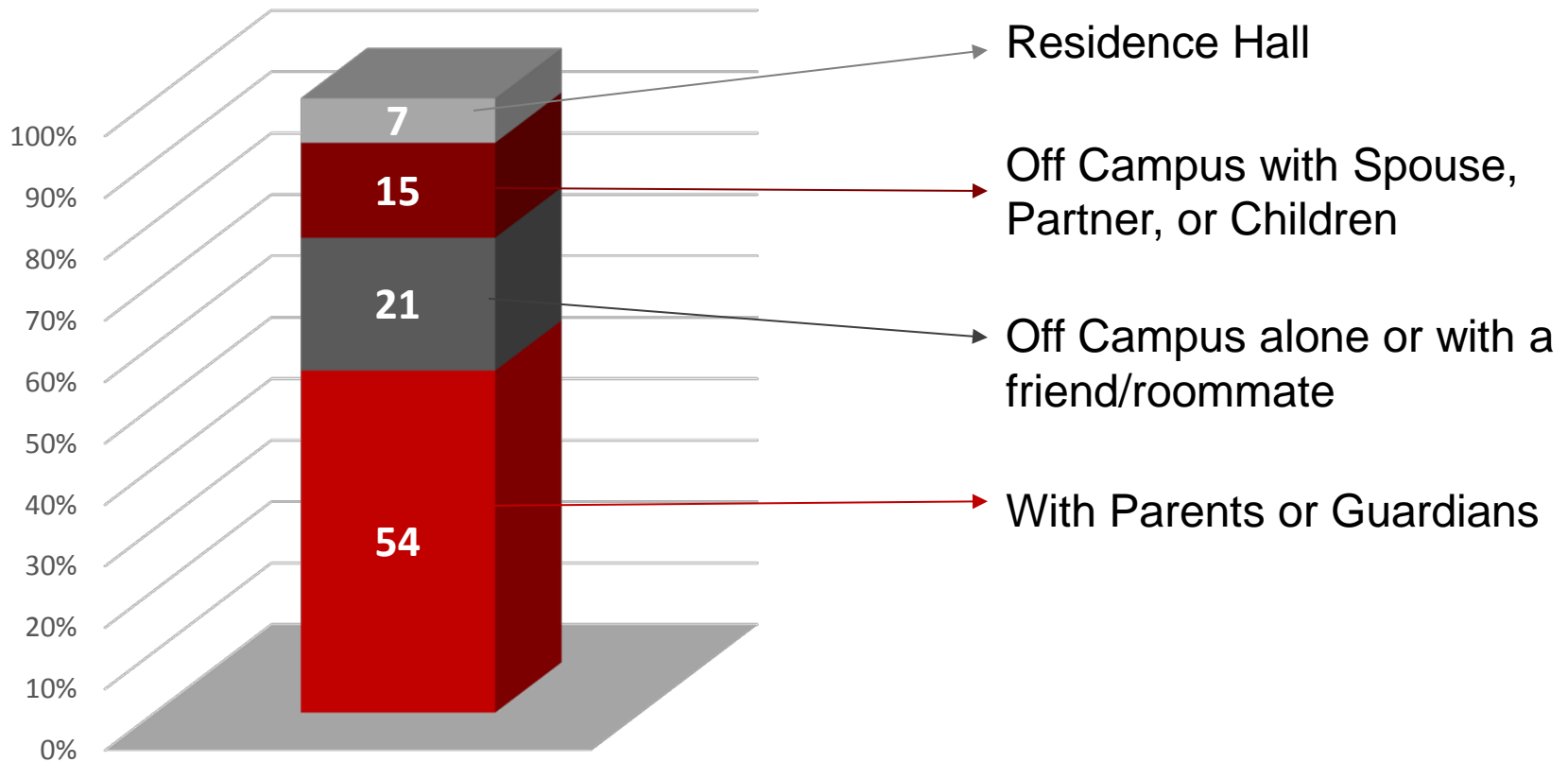


- More than 20 hours/wk
 - 22%
- Up to 20 hours/week
 - 45%
- Not working
 - 34%

Employment rates from Student Satisfaction Inventory, Spring 2014

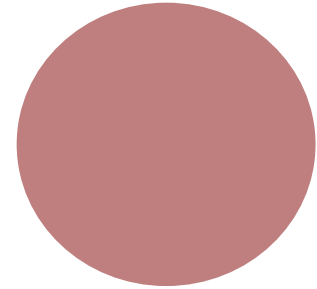
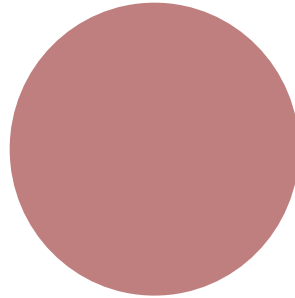
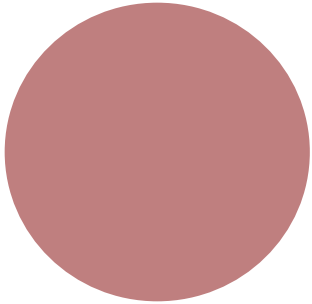
Image from <http://www.retirementplanblog.com/401k-plans/full-time-what-full-time/>

Where do they live?



Source: NASPA Campus Activities Consortium Study, spring 2015
Portions similar to Student Satisfaction Inventory, spring 2014

Other Characteristics



- Low Income¹
 - 32%
- First Generation²
 - 31%

Sources: 1 - UNLV student characteristics page from Voluntary System of Accountability, 2 - NASPA Campus Activities consortium study, spring 2015

Choice to Attend UNLV

1st

2nd

3rd

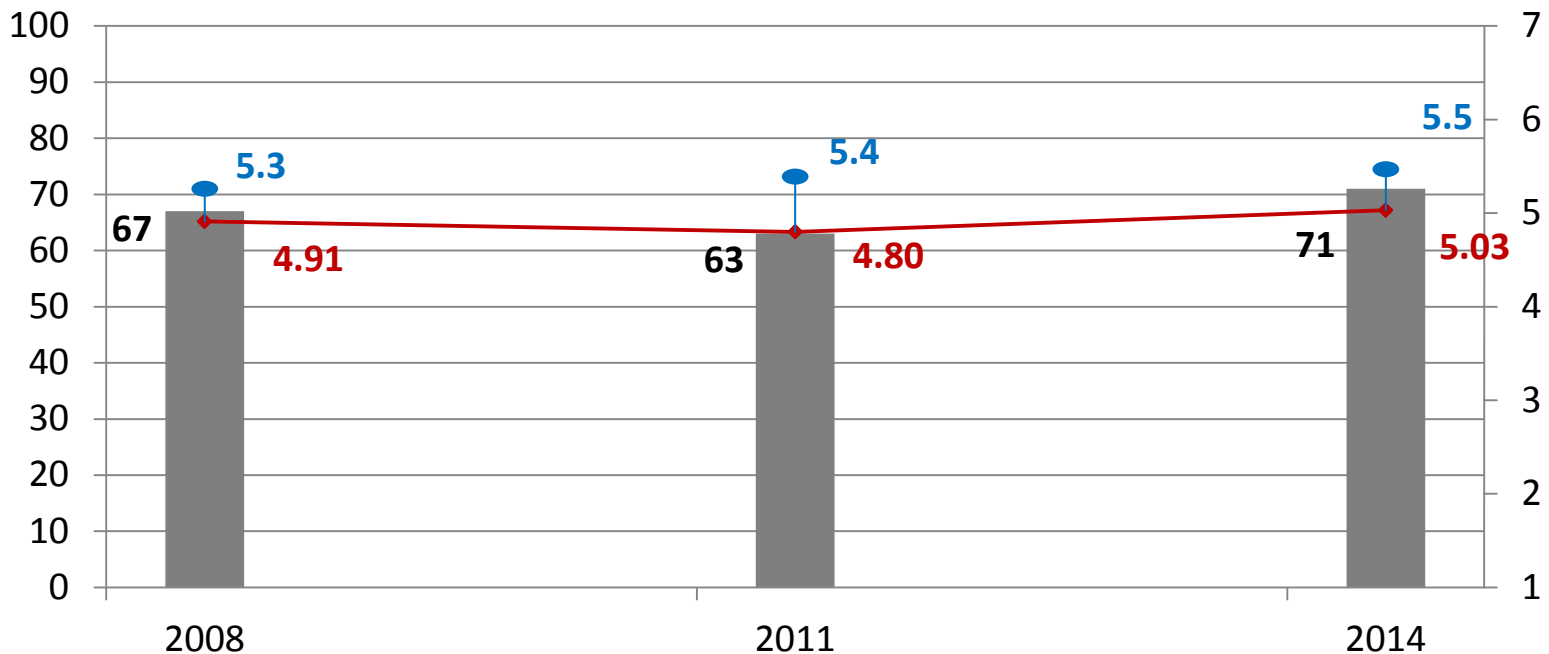


Source: Student Satisfaction Inventory, spring 2014

SSI 2014 Overall Satisfaction

71% of students were satisfied. Mean rating was 5.03/7.

UNLV Satisfaction through the Years:
UNLV Percent Satisfied with Mean **UNLV** and **National** Ratings



Impact on Overall Satisfaction

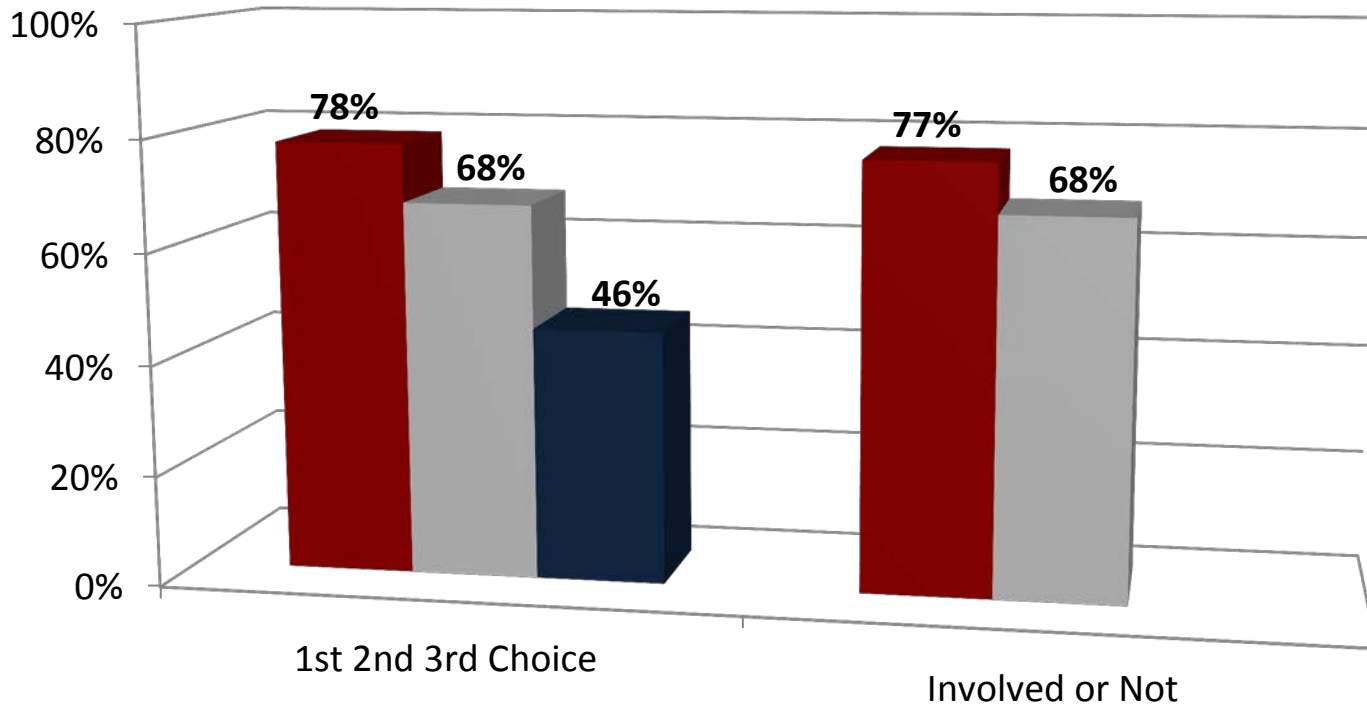
- No significant differences (SSI 2014)
 - Gender
 - Race and Ethnicity
 - Age
 - Classification
 - Academic Load
 - Current GPA
 - College
 - International vs Domestic
 - Disability
 - Employment

Impact on Overall Satisfaction

- Significant differences (SSI 2014)
 - Choice of UNLV
 - 1st
 - 2nd
 - 3rd or later
 - Involved in UNLV co-curricular activities such as
 - Student organizations
 - Fraternities or sororities
 - Intramurals
 - Campus events
 - Community service

Impact on Satisfaction

Portion of UNLV students favorably endorsing satisfaction
 $p < .001$



NSSE 2012 – Involvement

Participation in co-curricular positively related with six outcomes:

	Involved	Not Involved
• Understanding yourself	64.3%	53.3%
• Contribute to welfare of community	45.6%	34.9%
• Solving complex real-world problems	61.4%	51.8%
• Developing personal code of ethics	58.9%	49.3%
• Acquiring job related skills	65.6%	57.0%
• Understanding people of other races/ethnicities	56.1%	48.8%

	UNLV	Select 7
First-Year	39%	52%
Senior	34%	39%

NSSE 2012 – Service

Participation in community service positively related with five outcomes:

	Service	No Service
• Contribute to welfare of community	46.0%	33.7%
• Solving complex real-world problems	61.6%	51.0%
• Working effectively with others	69.7%	60.4%
• Developing personal code of ethics	58.2%	49.0%
• Acquiring job related skills	64.9%	56.0%

	UNLV	Select 7
First-Year	30%	40%
Senior	45%	60%

NSSE 2012 – Overall Experience

- How would you evaluate your entire educational experience?

	Freshman	Senior
– Poor	3%	4%
– Fair	22%	24%
– Good	54%	52%
– Excellent	22%	20%
Mean (of 4)	2.88***	2.75***

*** = below Select 7 peers, $p < .001$

SSI 2014 and NSSE 2012: Predictors of Overall Satisfaction

- Relationships with faculty, administrators
 - Approachable
 - Concern for individual
 - Caring
- Prompt feedback from professors/instructors
- Quality of academic advising

[Edit](#)

Reports

The Division of Student Affairs administers the [National Survey of Student Engagement \(NSSE\)](#) and the [Student Satisfaction Inventory \(SSI\)](#) every three years.

- [NSSE 2012 Presentation](#)
- [NSSE 2009 Presentation](#)

- [SSI 2014 Presentation](#)
- [SSI 2014 Summary Report](#)
- [SSI 2011 Presentation](#)

Campus Life Assessment Reports

- [Residence Life Consortium Study – Spring 2015 \(coming soon\)](#)
- [Campus Activities Consortium Study – Spring 2015](#)
- [Fraternity & Sorority Life Consortium Study – Spring 2014](#)
- [Residence Life Consortium Study – Spring 2014](#)
- [Student Staff and Leaders Outcomes Report Spring 2014](#)
- [Strengths Inventory Continuing Student Spring 2013 Key Findings](#)
- [Student Union Consortium Survey Spring 2013 Key Findings](#)
- [Campus Recreation Consortium Survey Spring 2013 Key Findings](#)
- [Student Staff and Leader Outcomes Report Spring 2013](#)
- [Social Justice Survey Spring 2013 Key Findings](#)

Office of Decision Support: Who We Are

- Website: <http://ir.unlv.edu/>

The screenshot shows the website's header with the UNLV logo, navigation tabs for 'My IAP', 'Reports', 'Decision Support', 'Planning', and 'About Us', and a search bar. Below the header is a main title 'Office of Decision Support' and a welcome message. The main content area features six informational cards: 'Institutional Analysis & Planning', 'Enterprise Data Warehousing', 'Business Intelligence', and 'Data Governance'. At the bottom is a horizontal carousel with six items: 'UNLV Analytics', 'UNLV Data Warehouse', 'Data Governance', 'Data Dictionary', 'On Point', and 'Student Profiles'.

OFFICE OF DECISION SUPPORT Login | Register

UNLV My IAP Reports Decision Support Planning About Us

Office of Decision Support

Welcome! The Office of Institutional Analysis and Planning is officially renamed the Office of Decision Support, to more accurately reflect the functions of the office. Read more...

Institutional Analysis & Planning

Collecting, analyzing, and interpreting information to enhance the quality of decisions guiding the institution.

Enterprise Data Warehousing

Developing a comprehensive institutional information system that facilitates access to integrated data for reporting and analysis.

Business Intelligence

A set of technologies, tools, and practices for transforming raw data into meaningful and useful information.

Data Governance

A structure for strategic campus collaboration around the institution's informational assets.

◀ UNLV ANALYTICS UNLV Data Warehouse Data Governance Data Dictionary On Point Student Profiles ▶

Office of Decision Support: Self-Service Resources

- Public Reports
- Password-Protected Reports
- UNLV Analytics Dashboards
- UNLV Analytics Ad Hoc Reporting Tool

Public Reports

- <http://ir.unlv.edu/iap/Reports.aspx>
- Non-sensitive data and information about the University
 - Enrollment, Retention, and Graduation
 - Degrees Awarded
 - Institutional Reports and Profiles
- Can be used for public reports and student projects

Public Reports

OFFICE OF DECISION SUPPORT

[Login](#) | [Register](#)

UNLV

[My IAP](#)

Reports

[Decision Support](#)

[Planning](#)

[About Us](#)

Search IAP...



Student Profiles

[At UNLV...](#)

[University Student Profile](#)

[Undergraduate Student Profile](#)

[Graduate and Professional Student Profile](#)

[Applicants, Admits, Enrolled Students](#)

[Participation Rates](#)

[Headcount by Major, Summarized by Degree Type](#)

[International Students](#)

[Transfer Students](#)

Course Profiles

Diversity

[FTE Enrollments](#)

[Student Tracking](#)

[Degree Profiles](#)

[Faculty and Staff Profiles](#)

[Institutional Profiles](#)

[Research](#)

[Reports Archive](#)

[Campus Resources](#)

[Fiscal Resources](#)

[IR Resources](#)

[Methods and Standards](#)

Reports and Resources

The Office of Decision Support prepares a wide variety of static reports and interactive, dynamic reports and dashboards for use in university planning and decision-making.

These reports encompass a variety of subject areas, which you may explore on the menu to the left. The office also provides limited support for *ad hoc* reports.

Should you have questions around finding information to meet your needs, please [contact us](#) for additional assistance.



Password-Protected Reports

- Contain sensitive and FERPA-protected aggregate data
 - Race-Ethnicity
 - Faculty
- To access these data, you need to:
 - Be an active UNLV employee
 - Request an ODS Web Account password (transitioning to ACE)
- Students, including graduate assistants, cannot be granted access to the password-protected reports and these data cannot be used for research projects without IRB approval.

Password-Protected Reports

- <http://ir.unlv.edu/iap/Reports.aspx>



Student Profiles
Course Profiles
Diversity
FTE Enrollments
Student Tracking
Degree Profiles
Faculty and Staff Profiles
At UNLV...
Institutional Profiles
Research
Reports Archive
Campus Resources
Fiscal Resources
IR Resources
Methods and Standards

Reports and Resources

The Office of Decision Support prepares a wide variety of static reports and interactive, dynamic reports and dashboards for use in university planning and decision-making.

These reports encompass a variety of subject areas, which you may explore on the menu to the left. The office also provides limited support for *ad hoc* reports.

Should you have questions around finding information to meet your needs, please contact us for additional assistance.



UNLV Analytics Dashboards

- Enrollment Management
- RPC Benchmarks
- Risk Factors (in testing)
- <https://ir.unlv.edu/IAP/decisionsupport/Content/Dashboards.aspx>
- To access these data, you need to:
 - Be an active UNLV employee
 - Have completed the online FERPA tutorial
 - Know your ACE Account credentials
 - Request Access
 - https://ir.unlv.edu/IAP/DecisionSupport/Content/Requesting_Access.aspx

UNLV Analytics Dashboards

- Contain sensitive and FERPA-protected aggregate data
 - Race-Ethnicity
 - Faculty
- To access these data, you need to:
 - Be an active UNLV employee
 - Have completed the online FERPA tutorial
 - Know your ACE Account credentials
 - Request Access
 - https://ir.unlv.edu/IAP/DecisionSupport/Content/Requesting_Access.aspx

RPC Benchmarks

Select your cohort and click APPLY:

* Cohort:
 * Cohort Term:
 * Course Load:

First-year Retention of Full Time, New Freshmen Fall 2013 to Fall 2014

Cohort Headcount	Retained at UNLV	
	#	%
3,564	2,735	76.7%

Gender and Race/Ethnicity

Gender	Cohort Headcount	Retained at UNLV	
		#	%
F	2,107	1,638	77.7%
M	1,457	1,097	75.3%
Grand Total	3,564	2,735	76.7%

Race/Ethnicity	Cohort Headcount	Retained at UNLV	
		#	%
American Indian or Alaska Native	5	4	80.0%
Asian	613	519	84.7%
Black or African American	276	199	72.1%
Hispanic	1,039	784	75.5%
Native Hawaiian or Other Pacific Islander	45	33	73.3%
Nonresident Alien	63	54	85.7%
Two or more races	357	258	72.3%
Unknown	33	24	72.7%
White	1,133	860	75.9%
Grand Total	3,564	2,735	76.7%

Gender	Race/Ethnicity	Cohort Headcount	Retained at UNLV	
			#	%
F	American Indian or Alaska Native	2	2	100.0%
	Asian	351	297	84.6%
	Black or African American	175	132	75.4%
	Hispanic	635	487	76.7%
	Native Hawaiian or Other Pacific Islander	19	13	68.4%
	Nonresident Alien	37	36	97.3%
	Two or more races	222	160	72.1%
	Unknown	23	15	65.2%
	White	643	496	77.1%
F Total		2,107	1,638	77.7%
M	American Indian or Alaska Native	3	2	66.7%
	Asian	262	222	84.7%
	Black or African American	101	67	66.3%
	Hispanic	404	297	73.5%

Ten-year Trend



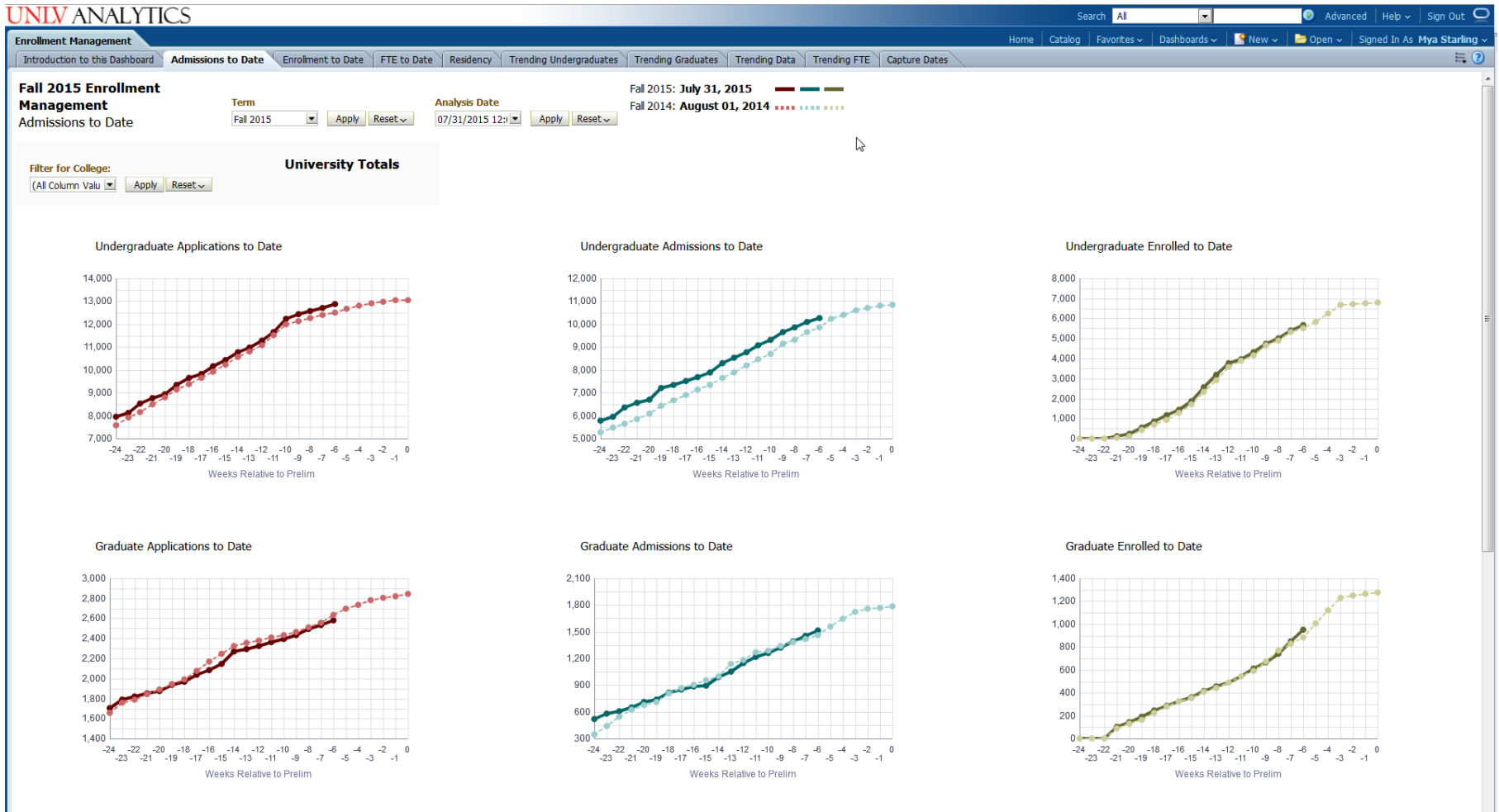
Cohort Term	Cohort Headcount	Retained at UNLV	
		#	%
Fall 2004	3,093	2,235	72.3%
Fall 2005	2,936	2,072	70.6%
Fall 2006	2,527	1,886	74.6%
Fall 2007	2,774	2,106	75.9%
Fall 2008	3,021	2,211	73.2%
Fall 2009	3,078	2,395	77.8%
Fall 2010	2,903	2,222	76.5%
Fall 2011	2,701	2,061	76.3%
Fall 2012	2,986	2,309	77.3%
Fall 2013	3,564	2,735	76.7%

[Print](#) - [Export](#)

College of Major

Cohort College Description	Cohort Headcount	Retained at UNLV	
		#	%
Allied Health Sciences	229	180	78.6%
College of Education	106	78	73.6%
College of Engineering	326	262	80.4%
College of Fine Arts	271	203	74.9%
College of Hotel Admin	246	204	82.9%
College of Liberal Arts	351	264	75.2%
College of Sciences	514	396	77.0%
College of Urban Affairs	271	189	69.7%
Community Health Sciences	19	11	57.9%
Lee Business School	444	333	74.8%

Enrollment Management



Risk Factors for Retention

UNLV ANALYTICS

Search All

Risk Factors Home Catalog Favorites

Welcome Risk Factor Descriptions **Summary by College** Listing by Department Listing by Course First-Year Seminars Honors College Student Athletes Student Lookup

Filter results by:

New/Readmit/Continuing Academic Level (Beginning of Term)

--Select Value-- --Select Value-- Apply Reset

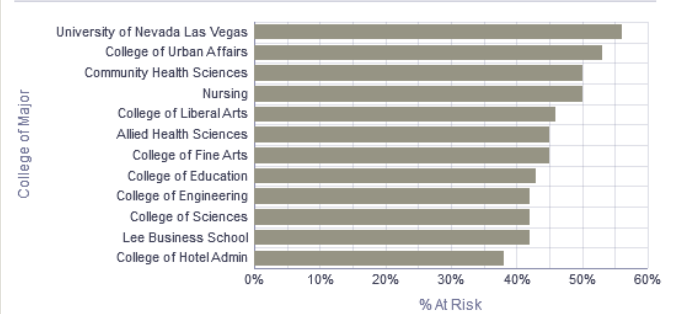
Undergraduate Students Having Possible Risk Factors

by College of Major

Spring 2015 as of 8/5/2015

	Zero Risk Factors	1	2	3	4+	At Risk (2+)	% At Risk	Total Students
Allied Health Sciences	388	503	365	232	141	738	45%	1,629
College of Education	220	349	241	121	71	433	43%	1,002
College of Engineering	479	596	430	252	122	804	42%	1,879
College of Fine Arts	349	499	393	192	122	707	45%	1,555
College of Hotel Admin	683	653	492	229	116	837	38%	2,173
College of Liberal Arts	635	968	775	395	251	1,414	46%	3,024
College of Sciences	538	772	521	275	157	953	42%	2,263
College of Urban Affairs	378	672	594	359	257	1,210	53%	2,260
Community Health Sciences	41	88	70	31	29	130	50%	259
Lee Business School	734	999	714	367	221	1,302	42%	3,035
Nursing	236	319	261	175	122	558	50%	1,113
University of Nevada Las Vegas	241	334	299	234	201	734	56%	1,309
Grand Total	4,678	6,491	4,966	2,772	1,759	9,497	45%	20,666

Percentage of Students with Two or More Risk Factors



Notes:

1. Includes degree- and certificate-seeking undergraduate students enrolled in the given term as of the date indicated.
2. Excludes Singapore and post-baccalaureate students.
3. Students majoring in more than one college are included in totals for each college. Grand totals reflect unduplicated counts.
4. Students who have not yet declared a major (i.e., 'Exploring') are categorized under 'University of Nevada Las Vegas'.

Source: UNLV Data Warehouse/MyUNLV Analytics
Office of Decision Support, 8/6/2015

[Print](#) - [Export](#)

UNLV Analytics Ad Hoc Reporting Tool

- Enables you to create your own custom Admissions, Enrollment and Degrees-Conferred reports
- Requesting access similar to dashboards
- Requires an explanation of how you intend to use UNLV Analytics because it contains record-level data
- Three-hour trainings are available through the office

Data Requests

- Some limited capacity to provide support for accreditation and grant applications when needed
- Two weeks lead time for requests
- When to go through the Registrar's Office:
 - Record-level data requests
 - When student contact information is needed



Questions?

Office of Decision Support

w: <https://ir.unlv.edu/> e: iap@unlv.edu p: x5-3771

Campus Life Assessment

<http://classessment.wordpress.com/>